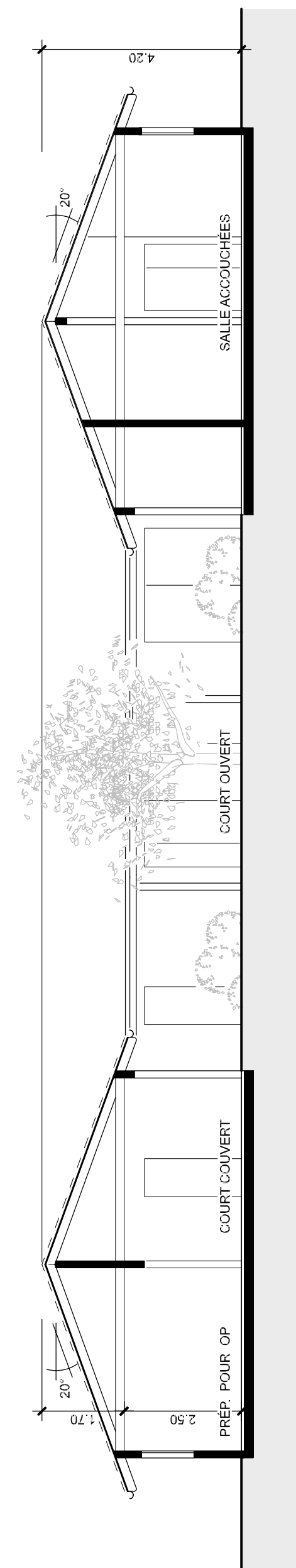
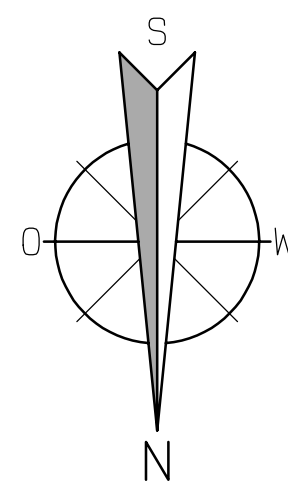


PLAN DE CONSTRUCTION



SECTION TRANSVERSALE A-A



FONDATION KIMONGO - HILFE
 MATERNITÉ MBUKU DIBINDU

PL.	OBJ.
	003

MSST.	1:100
DAT.	25.06.14
PL. GR.	63 / 50
REV.	
GEZ.	MS

PLANIFICATION DU PROJET

RUEDI LÖSCHHORN ARCHITECTE HTL DORFSTRASSE 210
 TEL. 056 / 243 15 16 FAX. 056 / 243 13 47 CH 5462 SIGLISTORF